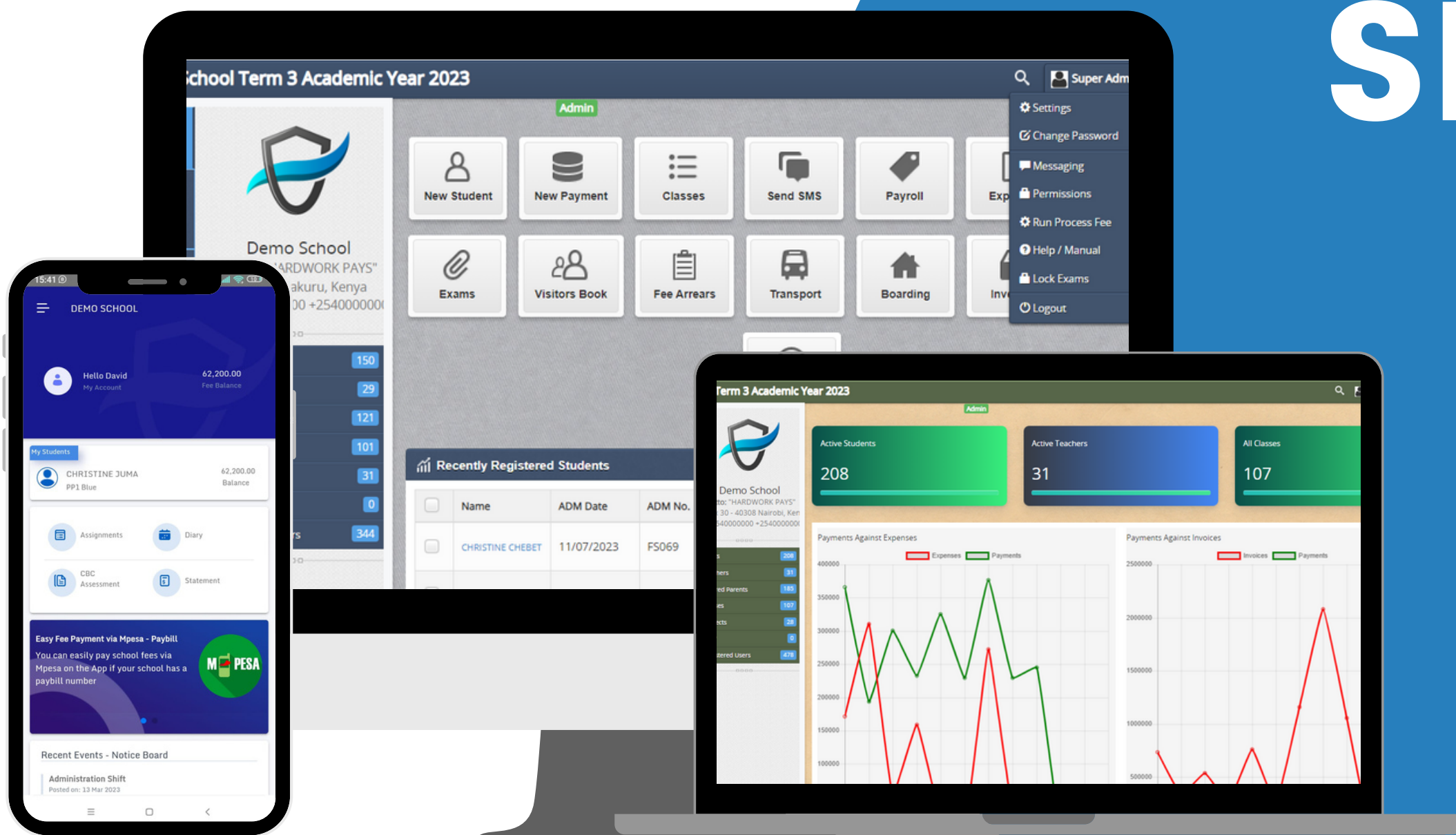


# SMARTSHULE SYSTEM FEATURES

A Comprehensive Look at SmartShule  
System Features



# TABLE OF CONTENT

**01** About Us

**02** Why SmartShule

**03** System Features

**04** Student Management

**05** Academics Management

**06** Account Management

**07** Procurement Mangement

**08** Transport Management

**09** System Security

**10** Integrations/Our Partners

# ABOUT US

SmartShule is a comprehensive school management system designed to streamline and enhance various administrative and academic processes within educational institutions. Packed with a range of powerful features, SmartShule aims to simplify school management, improve communication, and provide valuable insights for better decision-making.







## SIMPLIFYING SCHOOL OPERATIONS



# WHY SMARTSHULE?



## Comprehensive Features

SmartShule offers a comprehensive suite of features providing a one-stop solution for the diverse needs of an educational institution.



## Support and Training

SmartShule offers a strong support system and training resources that can contribute to the successful implementation and ongoing use of the system.



## Data Security and Compliance

SmartShule is committed to data security and adherence to relevant security standards.



## Scalability

SmartShule may offer scalability advantage to accommodate the growth and evolving needs of an institution.





# System Features

**01** Students Management

**02** Academics Module

**03** Accounts Module

**04** Bank Account Feature

**05** Procurement Management

**06** Inventory Management

**07** Transport Management

**08** E-Library Features

**09** E-Classroom Features

**10** People Management

**11** Human Resource

**12** System Reports

# Student Management

Student Management in SmartShule is a robust module designed to efficiently handle various aspects of student information and enrollment within an educational institution. Here are key features and functionalities:

01

## Student Information Database

SmartShule serves as a centralized repository for storing comprehensive student profiles including personal information, contact details, emergency contacts, and medical history.

02

## Enrollment and Admission

Capture necessary admission details, academic records, and supporting admission documentation efficiently

03

## Classroom Allocation

Assign students to their respective classrooms and courses based on grade levels, academic programs, or other criteria.

04

## Document Management

Store and manage important documents related to each student, such as transcripts, report cards, and identification documents.

05

## Transfer and Withdrawal Management

Administrators can update student records accordingly and generate transfer certificates or necessary documentation.

06

## Health and Medical Records

Access important health details and emergency contact information to ensure the well-being of students.

07

## Student Portal

Provide students with access to a dedicated portal where they can view their academic information, grades, and attendance records.

08

## Parent and Guardian Information

SmartShule maintains a database of parent and guardian details, facilitating effective communication.

# Academics Features

SmartShule's Academic Module seamlessly integrates CBC assessments, optimizes subject teacher allocation, and fosters a dynamic learning environment.

01

## Student Diary and Projects

SmartShule provides digital students diary, offering a centralized platform for keeping track of assignments, projects, deadlines, and important announcements.

02

## CBC Assessment

SmartShule provides a platform for teachers to record and provide analysis of various CBC Reports including Formative, Summative and Social Behaviour.

03

## Subject Teacher Allocation

Efficiently allocate subject teachers to classes and grade levels within the system based on their expertise and qualifications in specific subjects.

04

## Attendance and Participation Tracking

SmartShule includes tools for tracking student attendance and participation in class activities.

05

## SMS Exam Results

The addition of SMS exam results enhances communication providing a convenient and efficient way to keep parents informed about their child's academic progress.

06

## Lesson Planning and Resources

Teachers can use SmartShule to create and manage lesson plans, including details on instructional materials, activities, and assessments.

07

## Exam Management

Streamline the grading process and generate exam result reports cards for different curriculums including CBC, 844 and IGCSE for analysis.

08

## Parent-Teacher Communication

Provide access to real-time updates on student performance, attendance, and academic milestones

# Accounts Features

Financial Management within SmartShule encompasses various tools and functionalities aimed at efficiently handling the monetary aspects of school operations. Here's a breakdown of its key components:

01

## Fee Structure Setup

SmartShule allows administrators to define and customize the fee structure by customizing it through parameters like grade levels, programs, and term sessions.

02

## Bulk Fee Invoicing

Streamline the invoicing process by automatically generating invoices for tuition fees and other specified voteheads.

03

## Bulk Fee Statements and Emails

This feature allows administrators to generate, accumulate and share historical fee data, from previous periods and for multiple students or accounts simultaneously.

04

## Managing Invoices

SmartShule simplifies the tracking of issued invoices, indicating payment status and outstanding balances.

05

## SMS Fee Balance

Automatic reminders and notifications are sent to parents or responsible parties for upcoming or overdue payments.

06

## Fee Discount and Waivers Management

SmartShule simplifies the management of waivers and discounts, allowing schools to apply fee adjustments to specific students or categories.

07

## Enhanced Receipt Generation

Automatic receipt generation upon fee payment, providing instant confirmation to parents and guardians.

08

## Integration with Accounting Software

Ensure accurate and up-to-date financial records by syncing transactions with your external accounting systems e.g. Quickbooks.



# Bank Setup Features

These features collectively contribute to effective bank management within the SmartShule system, providing educational institutions with the tools they need to streamline financial processes, enhance transparency, and ensure compliance with financial regulations.

01

## Account Management

This feature allows the accountants to Create and manage bank accounts associated with the educational institution.

02

## Multi-Bank Support

Smartshule has apability to manage accounts across multiple banks if the institution uses more than one banking partner.

03

## Transaction Recording

Smartshule allows for capture of transaction details, such as date, amount, and purpose, for accurate record-keeping. Record and categorize financial transactions related to tuition fees, expenses, and other financial activities.

04

## Petty Cash Management

Smartshule has dedicated module for tracking and managing petty cash transactions.

05

## Bank Reconciliation

Smartshule has dedicated module for performing bank reconciliation within the SmartShule system.



# Procurement Features

The Expense Module in SmartShule is a comprehensive tool designed to manage all financial expenditures and maintain a transparent financial record within an educational institution. Key components include:

01

## Expense Tracking

SmartShule allows for the systematic recording of all expenses incurred by the school, ranging from operational costs to specific project expenditures.

02

## Approval Workflow

Define approval hierarchies and notification processes to maintain financial accountability and prevent unauthorized spending.

03

## Invoice and Receipt Management

Track and manage invoices associated with various expenses. Upload and store digital copies of invoices and receipts for easy reference and auditing purposes.

04

## Expense Items Management

Capture detailed information for each expense item, including descriptions, unit costs, and quantities.

05

## Petty Cash Management

SmartShule allows administrators to set up and manage petty cash funds for various departments or purposes within the institution.

06

## Petty Cash Transaction Recording

Keep a detailed record of all withdrawals and expenses made from the petty cash fund, ensuring transparency and accountability.

07

## Reporting and Accountability

Enhance accountability by providing clear insights into how petty cash funds are utilized across different departments.

08

## Vendor/Supplier Management

Maintain a database of approved product suppliers within SmartShule, including contact information and vendor history.



# Inventory Features

The Inventory features within SmartShule are designed to efficiently manage and track various physical assets and resources within an educational institution. Here's are the key inventory features found within the system:

01

## Asset Tracking

SmartShule enables the tracking of different types of assets such as computers, projectors, laboratory equipment, textbooks, and other physical resources used in educational settings.

02

## Reorder Levels

When an item's quantity falls below the specified reorder level, SmartShule generates automatic notifications or alerts to procurement staff, ensuring timely replenishment.

03

## Stock Taking

SmartShule facilitates regular stock-taking activities to verify the physical count of items against the recorded quantities in the system.

04

## Link with Procurement

When procurement orders are made, the system allows for updates on the inventory records providing accurate information on the availability of new items.

05

## Items Giving Tracking

Whether it's textbooks given to students, laptops assigned to specific classrooms, or laboratory equipment provided to certain departments, the system maintains a log of items given and their current locations.

06

## Usage History

The system keeps history for each inventory item, recording dates of acquisition, check-out and check-in dates,

07

## Audit Trails

Any changes made to inventory records, including additions, modifications, and deletions, are logged, allowing administrators to trace the history of data modifications.

08

## User Accountability

User-specific actions and changes are logged, and access controls prevent unauthorized modifications to critical inventory data.

# Transport Module

## Route Management

Efficiently plan and manage transportation routes to ensure optimal utilization of resources and timely transportation for students.

## Manage Students in a Route

Effectively manage the roster of students assigned to a specific route.

## Stage Management

Organizing transportation services into stages or segments to ensure a systematic and well-organized process.

## Transport Invoicing

Invoicing functionality in SmartShule is designed to manage the financial aspect of transportation services provided by the system.

## Assign Students to Routes

Efficiently assign students to specific transportation routes based on their locations and preferences.

## Transport Report

Generate comprehensive reports related to transportation services for analysis, decision-making, and record-keeping.



# Library Features

SmartShule's e-library feature offers a digital repository of educational resources while the e-classroom feature in SmartShule facilitates online teaching and learning. The submodules include:

01

## Book Fund

This component is designed to manage and allocate resources for acquiring new books and educational materials.

02

## Borrowing and Returning Resources

The system allows users to borrow digital resources for a specified period and return them when finished

03

## Multi-Format Support

The e-library supports various file formats, accommodating different types of educational content such as PDFs, videos, audio files, and interactive multimedia.

04

## Resource Management

SmartShule's e-library offers tools for efficient resource management such as Lesson Plans, Lesson Materials and Schemes of Work.

05

## Donations and Contributions

System support for recording and tracking book donations, whether from individuals, organizations, or sponsors.

06

## Fine and Fee Management

Smartshule has tools for managing fines for overdue materials and other library-related fees.

07

## Resource Usage Analytics

Smartshule has enhanced analytics for tracking the usage patterns of various resources, helping in the assessment of their popularity and relevance.

08

## Integration with Learning Management System (LMS)

SmartShule accept integration with an LMS for online course delivery, content creation, and student engagement.

# E-Classroom Features

The E-classroom module in the SmartShule School Management System encompasses various features designed to enhance the learning experience . Key features include:

01

## CBC Videos

SmartShule allows the integration of Competency-Based Curriculum (CBC) videos, providing multimedia content to enhance the understanding of various subjects.

02

## Past Papers

The system allows the storage and sharing of softcopy past exams, enabling students to practice and prepare for upcoming assessments.

03

## Assignments

Teachers can share attachments and links related to assignments, making it easy for students to access and submit their work online.

04

## Lesson Materials

The module includes a repository for lesson preparation notes per subject. Teachers can organize and share comprehensive materials to aid in lesson planning and delivery.

05

## QnA Quizzes

Teachers can create question and answer quizzes to assess students' understanding of specific topics. The interactive nature of quizzes engages students in the learning process

06

## Automarking Quizzes

The system supports the generation of multiple-choice quizzes that are automatically marked saving teachers time allowing for more efficient assessment and prompt feedback to students.

07

## E-notes

Teachers can upload and share softcopy notes for different subjects, ensuring that students have easy access to study materials

08

## E-Books

Students can access a digital library of educational resources, promoting self-directed learning and exploration of diverse content.



# People Management Module

This module empowers system administrators to effortlessly oversee diverse user groups, including teachers, parents, students, non-teaching staff, and system users. It encompasses streamlined user account management, including password resets.



## Role-Based Access Control

Different levels of access for administrators, teachers, students, and parents.

## Sibling Management

Linking siblings within the system under a single family profile.

## User Profiles Management

SmartShule features detailed profiles for administrators, teachers, students, parents, board members, and non-teaching staff

## User Authentication and Security

Secure login processes to ensure the privacy and security of user data.

# Human Resource Features

The HR software streamlines and optimizes human resource management, addressing tasks like employee management, payroll processing and other essential functions. Key features include:

01

## Employee Database Management

The HR software maintains a centralized database of employee information, including personal details, job history, performance records, and contact information.

02

## Time and Attendance Tracking

Attendance tracking involves clocking in and out but also managing various types of attendance, including regular working hours, overtime and other leave types.

03

## Payroll Processing

Payroll Processing feature automates the calculation, distribution, and management of employee salaries, benefits, taxes, and other financial components.

04

## Employee Self-Service (ESS)

This feature empowers employees with direct access to work-related information like leave requests, detailed pay slips, tax forms, and benefits such as health insurance and retirement plans.

05

## Workforce Analytics

SmartShule could provide descriptive analytics, offering insights into historical data such as employee turnover, attendance patterns, and performance metrics.



# Communication Module

## Message System

SmartShule includes a messaging system that enables users to send and receive messages within the platform

## Broadcast/Bulk Messages

Smartshule has capability for administrators to send broadcast messages to the entire school community or specific groups.

## Delivery Tracking and Reporting

SmartShule provides tracking and reporting features for SMS and email deliveries.

## Event Notifications

Smartshule has event notifications to remind users of important dates, deadlines, or upcoming events

## Parent-Teacher Communication

Smartshule has tools for teachers and parents to communicate directly about a student's academic progress, behavior, or any other relevant information.

## Integration with External Platforms

SmartShule offers integration capabilities with external communication platforms, such as email services and messaging apps.

# SYSTEM REPORTS



The System Reports Module in SmartShule encompasses various report generation that provide valuable insights into different aspects of the educational institution. Key features include:



## Students Reports

SmartShule provides demographic information on student enrollment, including new admissions, transfers, and withdrawals, grade levels, and enrollment trends.



## Export and Printing Options

Reports generated within the System Reports Module can be exported in various formats (e.g., PDF, Excel) for further analysis or sharing.



## Book of Accounts and Asset Register

Provides a detailed overview of financial transactions recorded in the general ledger and Trial Balance- the balances of all ledger accounts to ensure that debits and credits are equal.



## Customizable Filters and Parameters

The System Reports Module are customizable, allowing users to set filters and parameters based on specific criteria e.g. time periods, or other relevant dimensions.



## Finance - Income and Expenditure Reports

SmartShule Summarizes the financial transactions of the institution, including revenue sources, expenses, and overall financial health.



## Graphical Representations

Some reports may include graphical representations such as charts and graphs, providing a visual overview of key metrics and trends for easier interpretation.

# SYSTEM SECURITY



## DATA ENCRYPTION

Sensitive data within Smartshule is encrypted both during transmission and at storage.

## USER ACCESS CONTROL

It entails, User Authentication and User authorization through account password protection.

## ROLE-BASED ACCESS CONTROL

Users can be assigned specific rights and roles.

## AUDIT TRAILS AND LOGS

Smartshule maintains detailed reports of user activities and system events.

## ANTIVIRUS AND FIREWALLS

The system employs Security systems to monitor network traffic and prevent any attacks

## SSL SUPPORT

Smartshule uses SSL to provide encryption and data integrity on all internet services.

## REGULAR DATA BACKUP


Data BackUp in Smartshule is automated and done twice a day. Manual Backup can also be done by system admins.

## REGULAR SECURITY UPDATES

Smartshule applies security updates to its software and infrastructure regularly



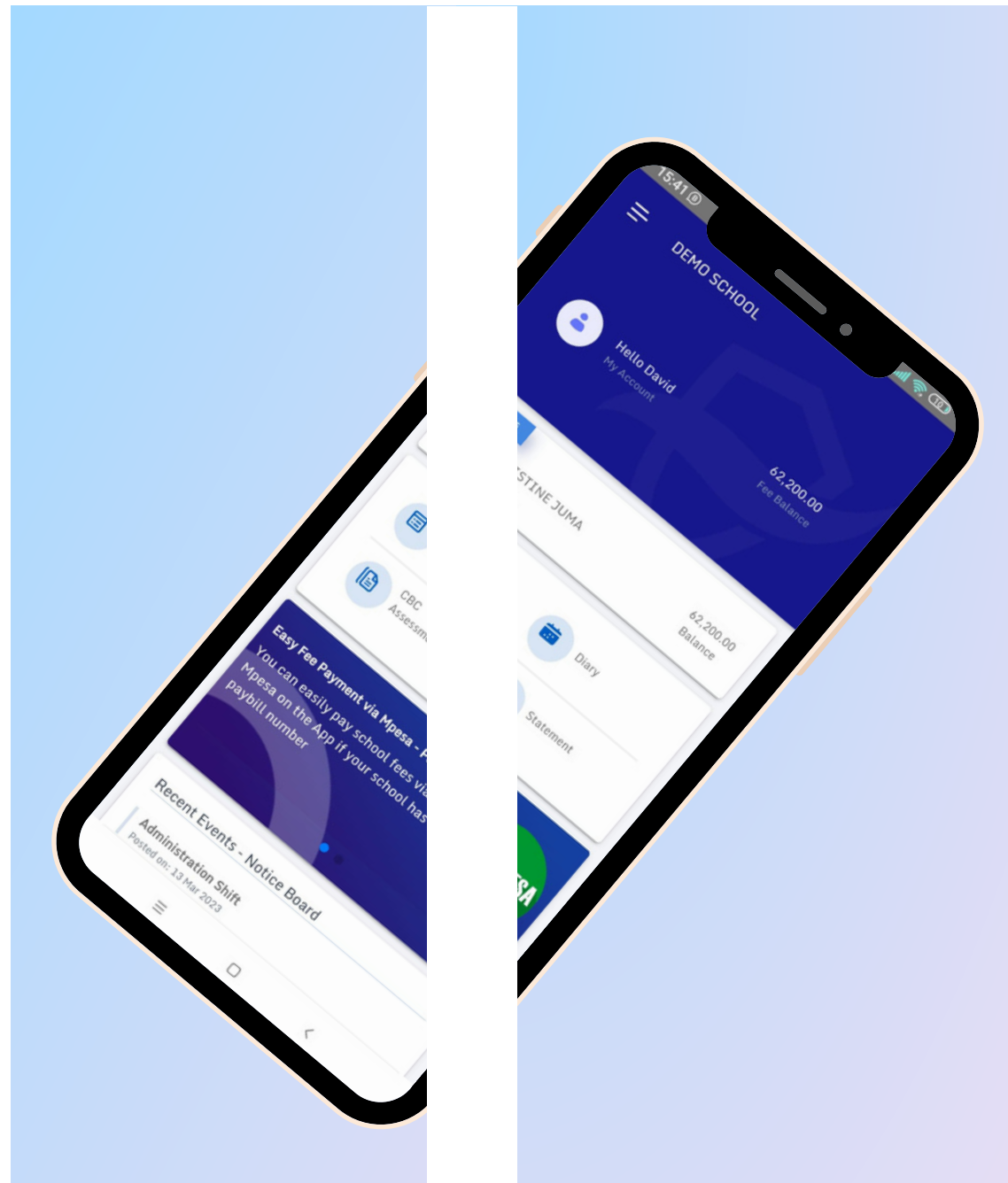
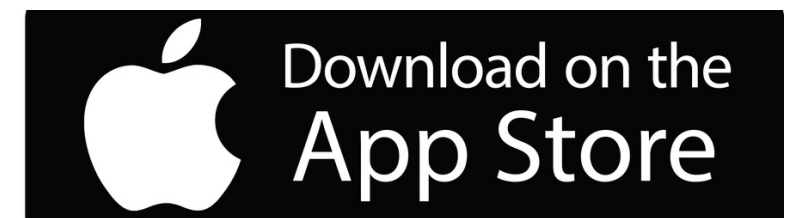
# MEASURES FOR PROTECTION OF PERSONAL DATA

- 
- 01** Smartshule implements **Distributed Denial of Service Protection(DDOS)** within data centres.
  - 02** Smartshule prevents **Password Theft Protection** to system users by providing password resets, Two Factor Authentication and encryption
  - 03** Smartshule emphasizes against **theft and sale of corporate data** by providing Non-Disclosure Agreements, Role Based User Access Control and provision of detailed audit log reports.
  - 04** Smartshule operates on a highly secure and protected environment featuring various security measures such as Firewall and Secure Socket Layer implementation, Data encryption, Audit logs to prevent **Cloud Attacks**
  - 05** Smartshule has incorporated anti-phising campaigns through Non Disclosure signings and conduction of thorough Employee Education on **Email and Internet Frauds**.
  - 06** Smartshule prevents **Advanced Persistent Threats** (APT) through Remote file inclusion, SQL injection and Cross-Site Scripting, Using of a secure application framework, File encoding, Code reviews and code quality analysis, Monitoring log files, Input validations,

## Parents Mobile App

# Download on your favorite platform

SmartShule's Parent Mobile is a user-friendly app providing convenient access to essential information, fostering a stronger connection between parents, students, and the educational institution. This App ensures parents stay actively engaged in their child's academic journey.



# 3RD PARTY INTEGRATIONS





# FEATURED CLIENTS

*Over 300+ Clients*



Juja Preparatory School



Lizar School Naivasha



Anestar Schools



Ongata Academy



Kingdom International



Fairmonts International



Rose of Sharon



Lizzie Wanyoike Prep



Thika Road Christian



Peter Crest Academy



Royal Brains



EarlyBird Schools

# CONTACT US

---



0115811539



[sales@smartshule.com](mailto:sales@smartshule.com)



[www.smartshule.com](http://www.smartshule.com)



Vision Plaza, along Mombasa Road.

